

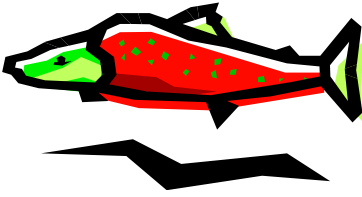
Lesson 3: Kalispel Foods 1

Vocabulary:

smłičn	salmon
?u?úse?	eggs
patáq	potato
snk ^w łpúlex ^w	bread
lk ^w osó	pork (bacon)
łmłmłto	beans
stšatq	huckleberries
esx ^w míp sqeltč	dry meat
sx ^w e?lí	camas

Sentences:

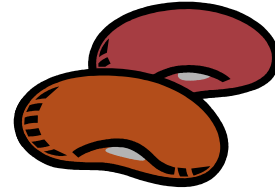
ha an xmenč łu _____?	Do you like _____?
in xmenč łu _____.	I like _____.
tam in xmenč łu _____.	I don't like _____.
ha k ^w es nte? t _____?	Do you want some _____.
uné? or ?e	Yes
ta, lemlmtš	No, thanks.



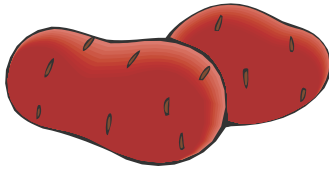
smłičn



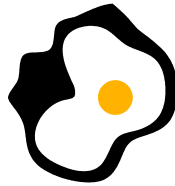
snk^wlpúlex^w



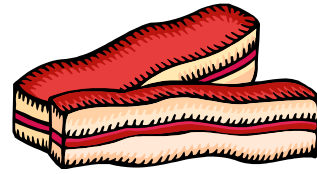
łm^włm^wto



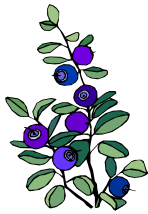
patáq



?u?úse?



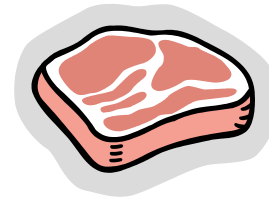
lk^wosó



stšatq



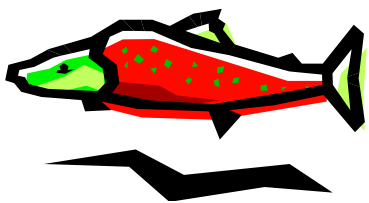
sx^wé?li


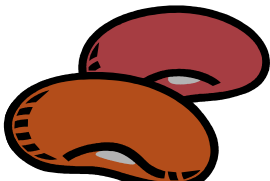


esx^wmíp sqeltč

i sk^west _____

Practice 1. Answer the questions by telling if you like or want the food shown in the picture.

<p>Model:</p> 	<p>Q1: ha an ɣmenč ɥu smłičn?</p> <p>A: in ɣmenč ɥu smłičn.</p> <p>A: tam in ɣmenč ɥu smłičn.</p>
--	---

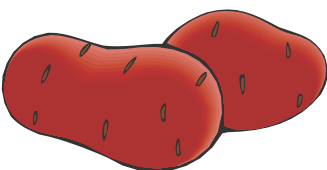
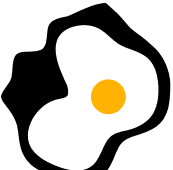
	
---	--

Q1: ha an ɣmenč ɥu snk^wípúlex^w

A:

Q1: ha an ɣmenč ɥu ɥmłmłto?

A:


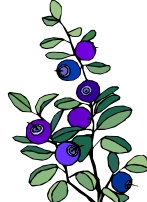
	
--	--

Q1: ha an ɣmenč ɥu patáq?

A:

Q1: ha an ɣmenč ɥu ɥu?úse? ?

A:

	
---	---

Q1: ha an ɣmenč ɥu lk^wosó ?

A:

Q1: ha an ɣmenč ɥu sśśalq?

A:

	
---	---

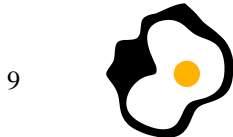
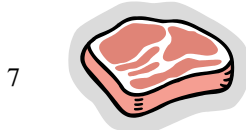
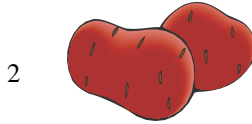
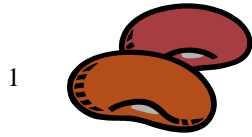
Q1: ha an ɣmenč ɥu sx^wé?li ?

A:

Q1: ha an ɣmenč ɥu esɣmíp sqeltč ?

A:

Practice 2. Draw a line from each word to a picture that matches. Use each picture one time only.



A esx^míp sqeltč

B ʔuʔúseʔ

C s^xʔéʔli

D snk^wʔpúlex^w

E ʔm^tm^to

F sm^ličn

G stš^aʔq

H lk^wosó

I patáq